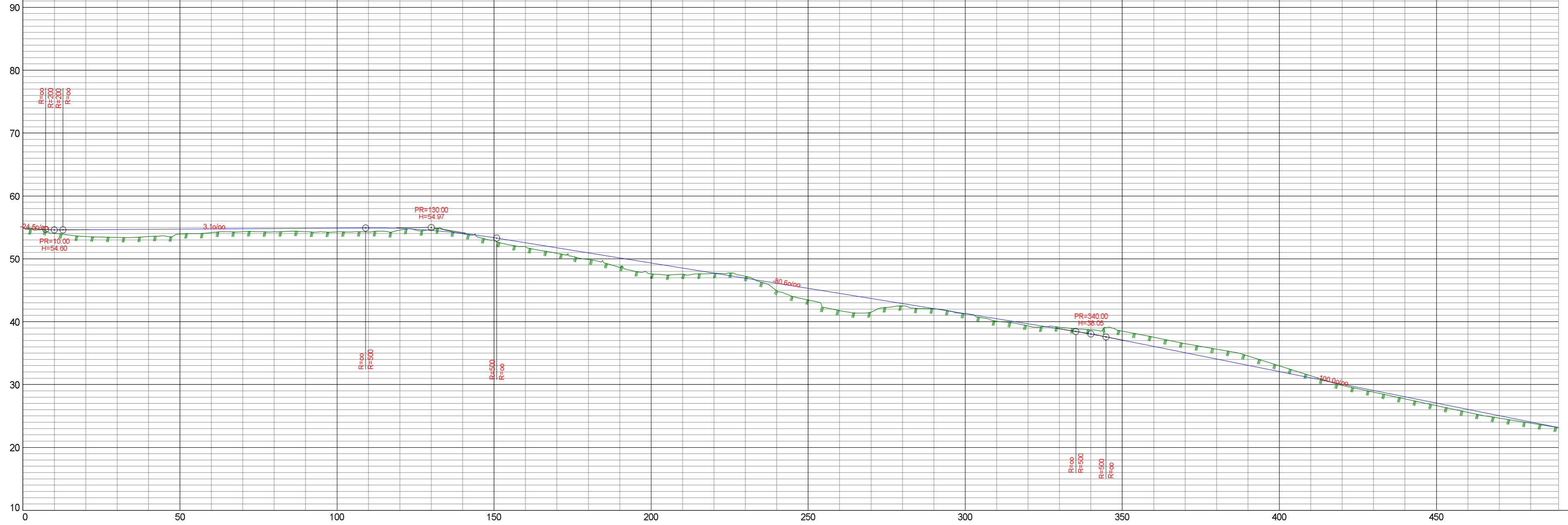
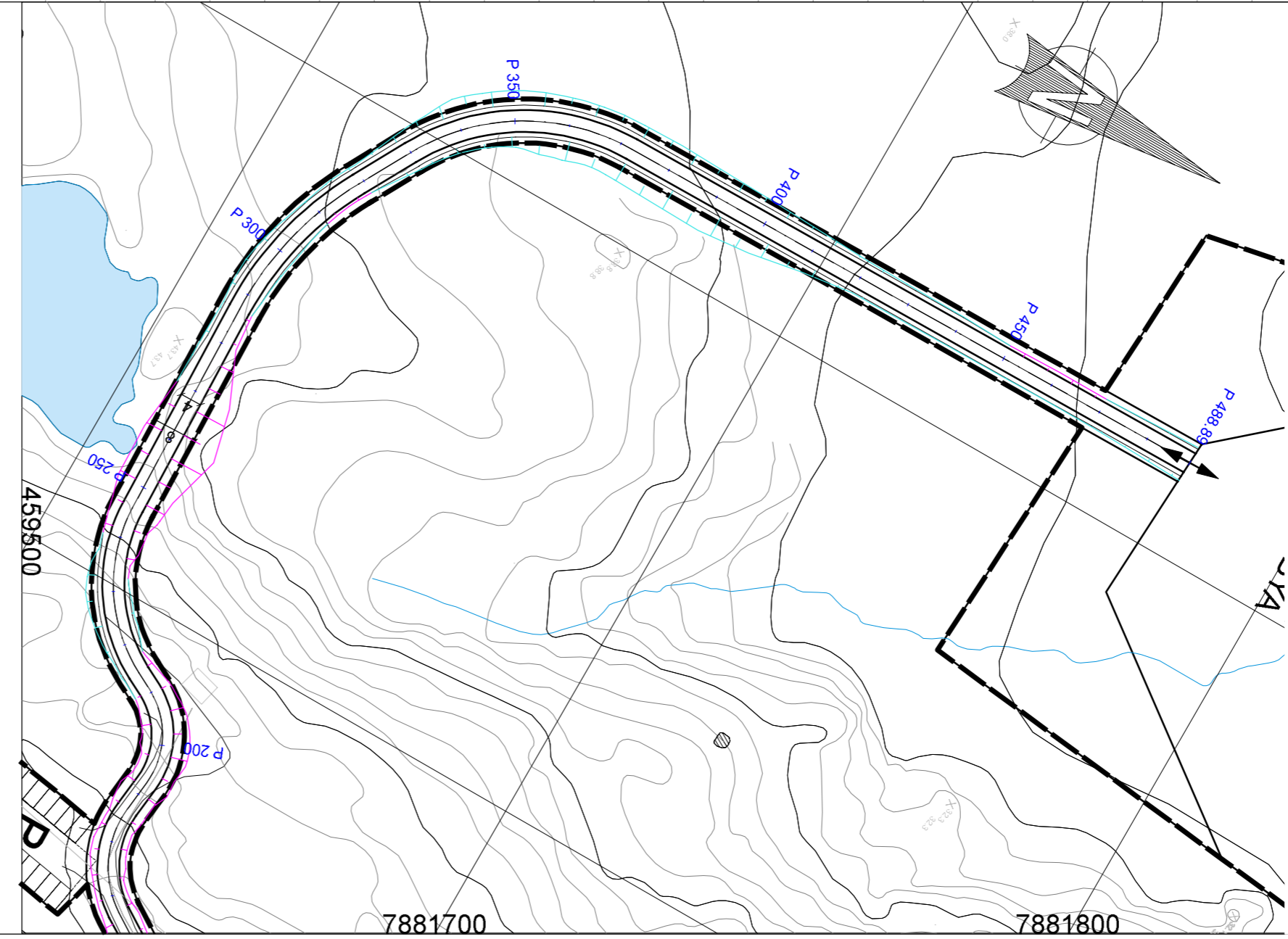
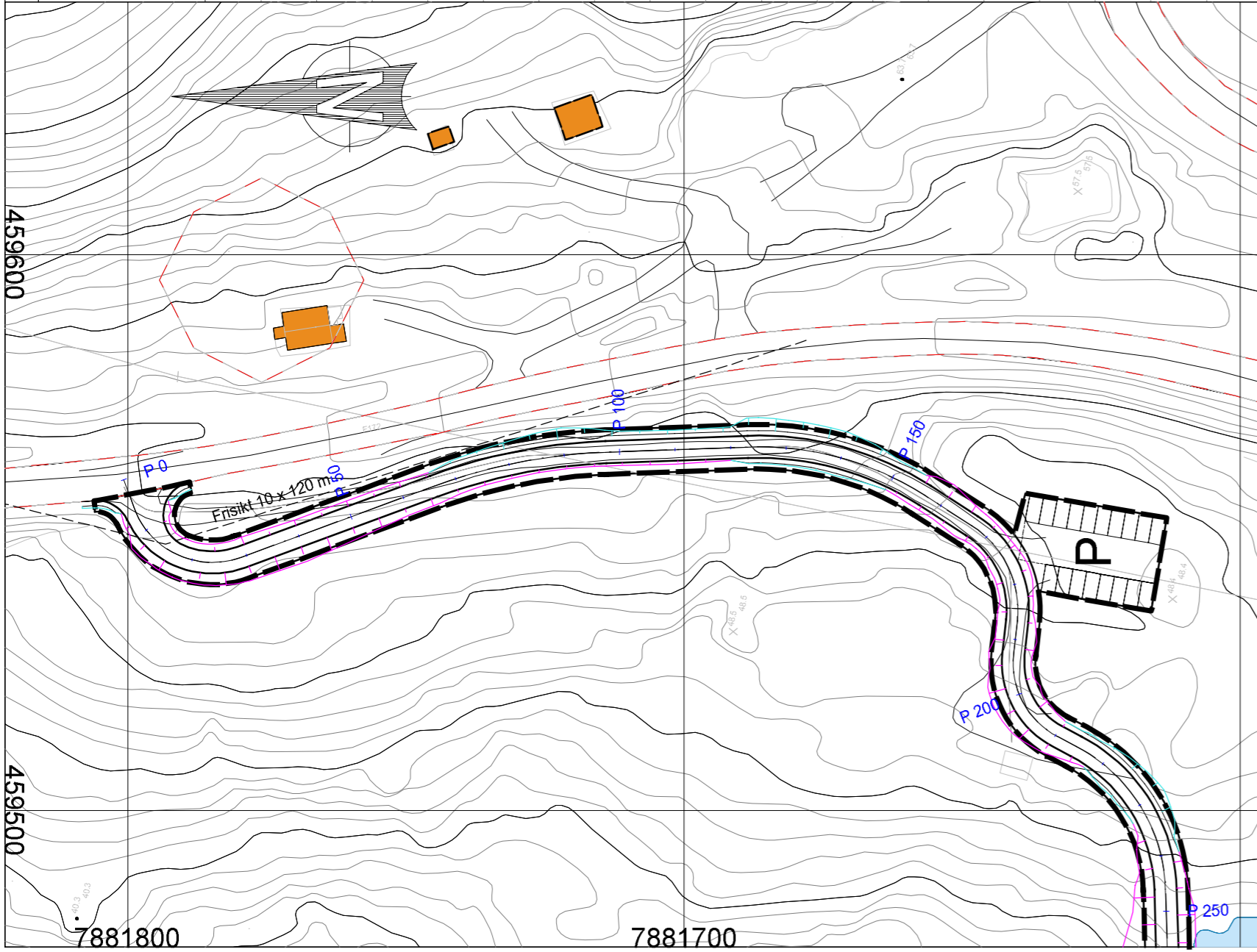


HOH.



HOR. KURV.	R=15.00		R=100.00		R=55.00		R=18.00		R=15.00		R=30.00		R=60.00		R=40.00																																																																																					
BREDEUTV.																																																																																																				
VEIBANE H.	-0.15	54.84	0.58	54.62	1.08	54.63	1.26	54.66	1.14	54.69	0.78	54.72	0.59	54.75	0.48	54.79	0.53	54.82	0.52	54.85	0.59	54.88	0.66	54.91	0.25	54.82	-0.11	54.53	0.07	54.05	0.41	53.36	0.64	52.55	0.87	51.75	1.04	50.94	1.54	50.14	1.73	49.33	0.98	48.53	0.04	47.72	-0.31	46.91	1.19	46.11	1.86	45.30	2.75	44.50	2.18	43.69	0.37	42.88	0.06	42.08	0.00	41.27	0.39	40.47	0.33	39.66	-0.27	38.86	-0.71	38.03	-1.46	37.05	-1.48	36.05	-1.45	35.05	-1.57	34.05	-1.49	33.05	-0.91	32.05	-0.34	31.05	0.18	30.05	0.25	29.05	0.32	28.05	0.39	27.05	0.47	26.05	0.41	25.05	0.19	24.05	0.00	23.16
SKJ./FYLL.																																																																																																				



Rev.	Tekst	Rev. dato	Kontr.:

asplan viak

Prosjekt
Fiskecamp Risfjorden
 Oppdragsgiver
Sarunas Paradnikas

Plan og profil veg

Oppdragsleder: AHJ	Tegn: VD	Målestokk: 1:1000/500 A2
Oppdragsnr: 611409-01	Kontr.:	Dato: 15.06.2017
Tegn.nr. TC -- 101		Rev.:
Fag Type	Område	Løpenr.

61144 201